



**100%**  
WATER PROOF



*Wahlstand Vitrified*  
EMBRACE THE WORLD

**Matt Collection**

**300X450MM**

**Vol - 1**







# A source of Inspiration

Walls become a canvas prepared to be decorated, where the only limit is our imagination. A new concept of wall tile presented in a small format where the combination of colours and the use of different volumes and effects are the main theme. Mixing, combining styles, boosting the creativity in every space.

Offering an endlessly number of possibilities in shapes, motives, designs and effects, with relief and volumes, capable of attracting everyone's attention. A guarantee for you and the world around you, as it releases absolutely no toxic substances





CHEMICAL AND  
STAIN RESISTANT



RESISTANT TO  
SCRATCHES



ECOLOGICAL



RESISTANT TO  
CHEMICALS



EASY TO CLEAN

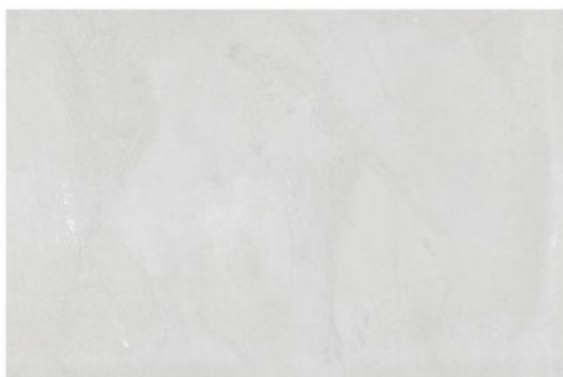


100% WATER  
RESISTANT

Series is combining states of the art wall tiles technology with natural look. A perfect choice for architects and interior designers with it's oxidized natural and variable shades. the series comes with many patern variations in order to give a full natural look. wall tiles guarantee an elegant, impeccable image over time; it is the ideal solution for creating a warm, refined atmosphere in living room, bedroom, restaurant and areas open to the public.

## THE NATURAL GRACE

300x450mm  
MATT FINISH



8001-LT



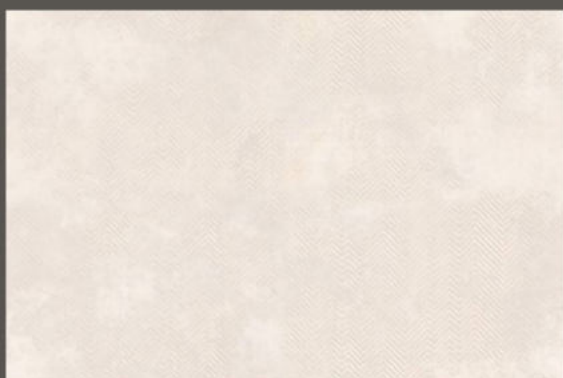
8001-DK



8001-HL-A  
8001-HL-B



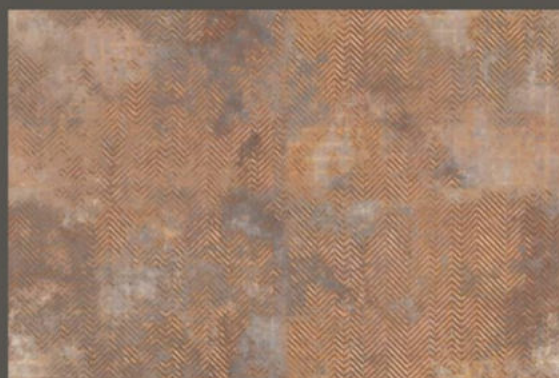
300x450mm  
MATT FINISH



8002-LT



8002-HL



8002-DK



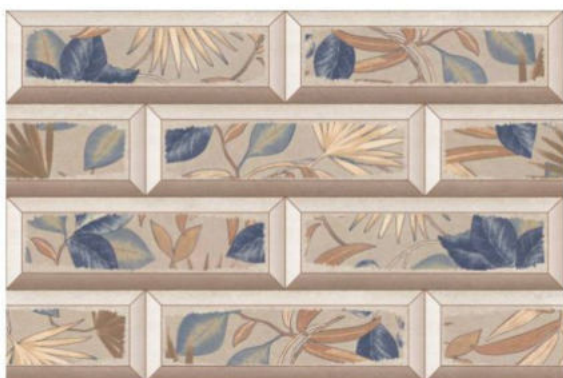




300x450mm  
MATT FINISH



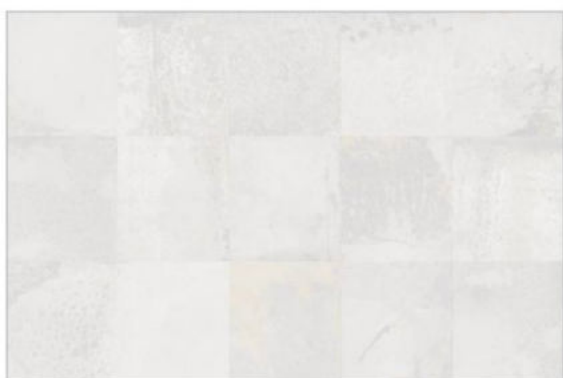
8003-LT



8003-HL



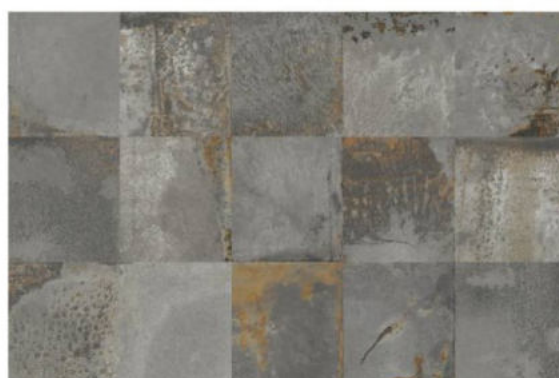
8003-DK



8004-LT



8004-HL



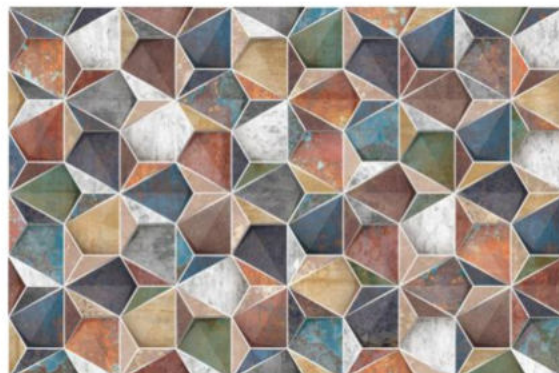
8004-DK



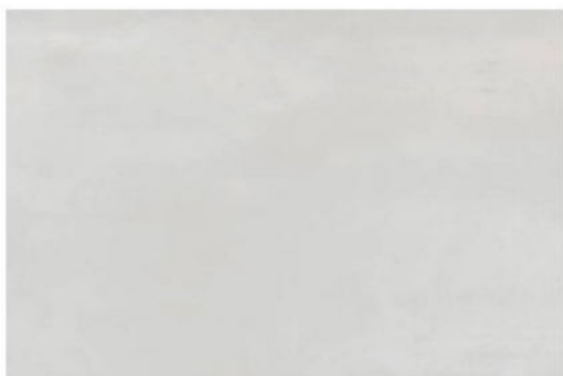
300x450mm  
MATT FINISH



8005-LT



8005-HL



8006-LT

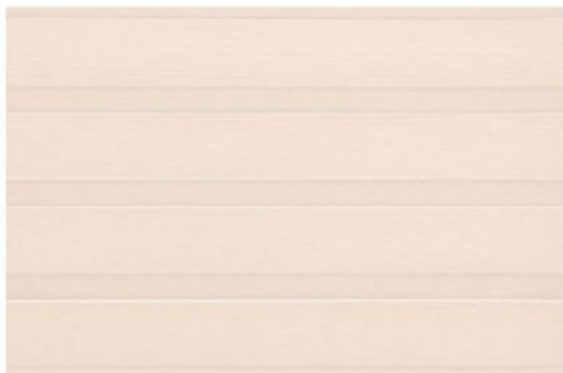


8006-HL



8006-DK

300x450mm  
MATT FINISH



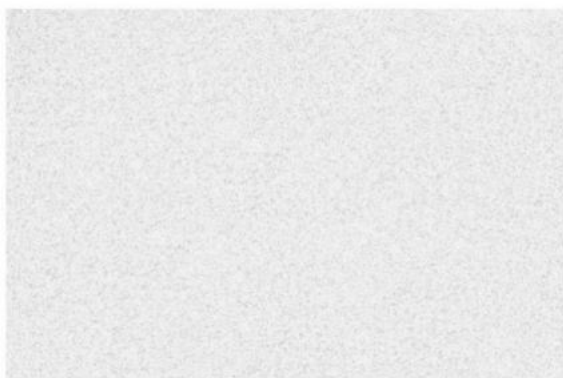
8007-LT



8007-DK



8007-HL-A  
8007-HL-B



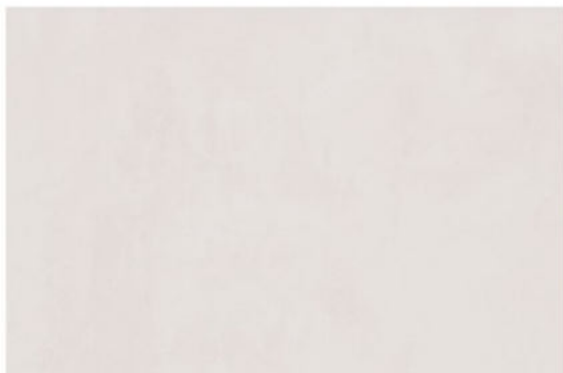
8008-LT



8008-HL



300x450mm  
MATT FINISH



8009-LT



8009-HL



8009-DK



8010-LT



8010-DK



8010-HL-1



8010-HL-2

300x450mm  
MATT FINISH



8011-LT



8011-HL



8011-DK



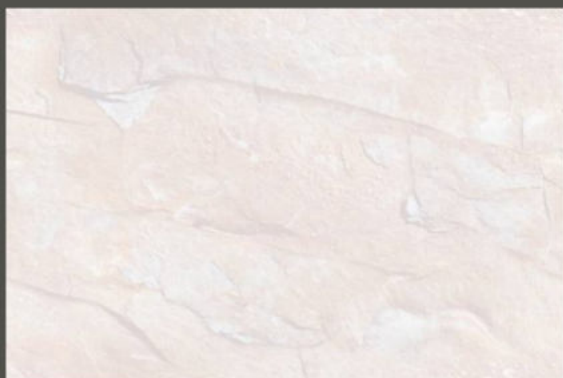
8012-LT



8012-HL



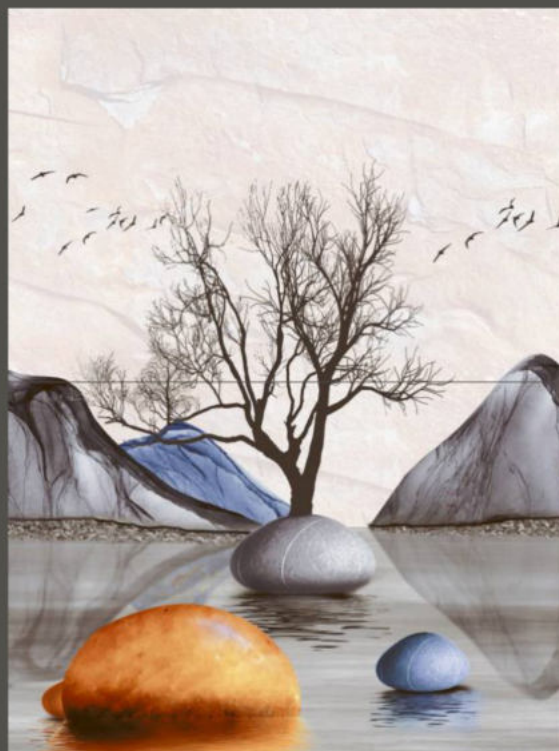
300x450mm  
MATT FINISH



8013-LT



8013-DK



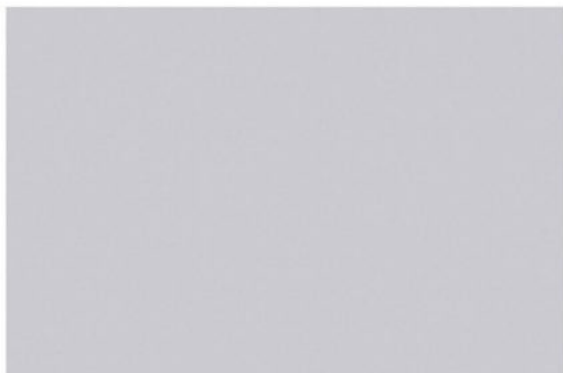
8013-HL-A  
8013-HL-B



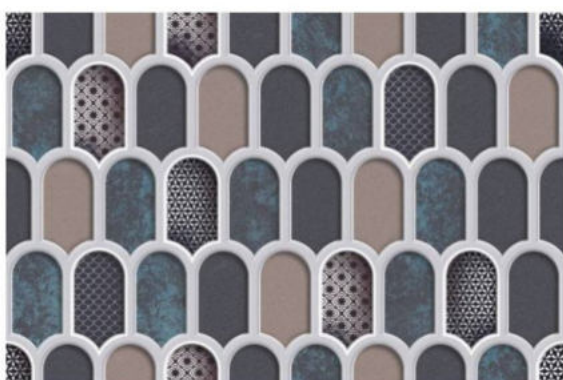




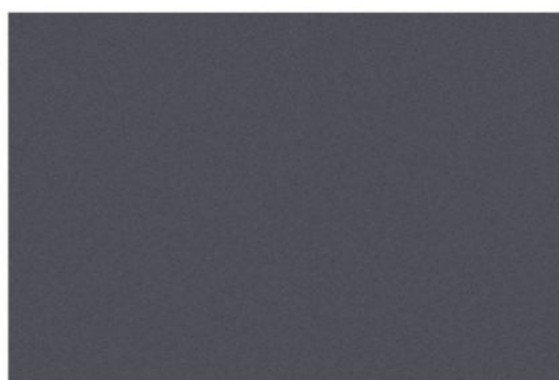
300x450mm  
MATT FINISH



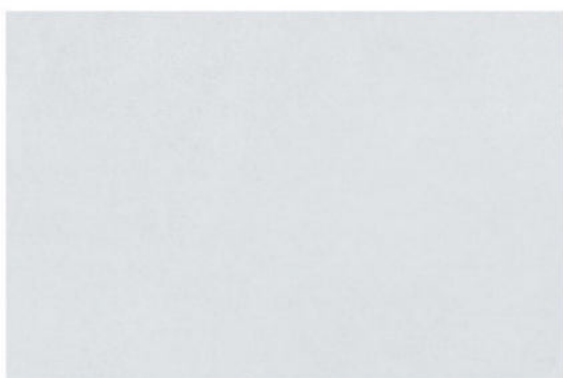
8014-LT



8014-HL



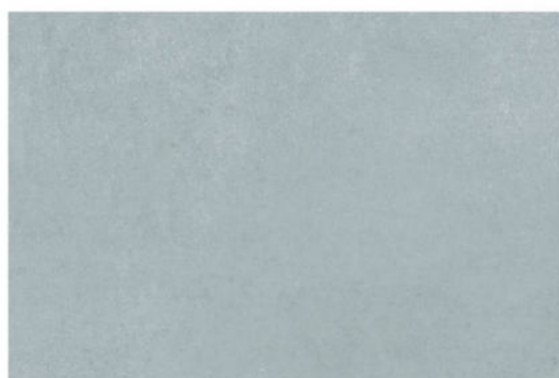
8014-DK



8015-LT



8015-HL

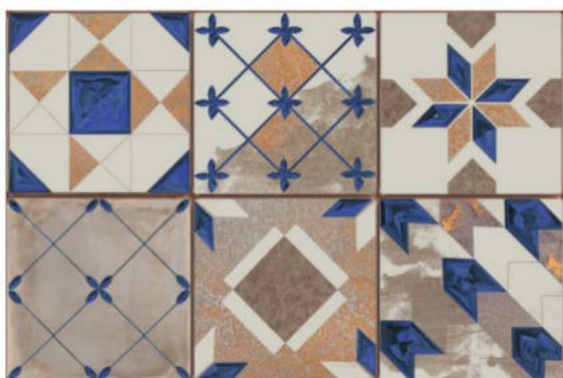


8015-DK

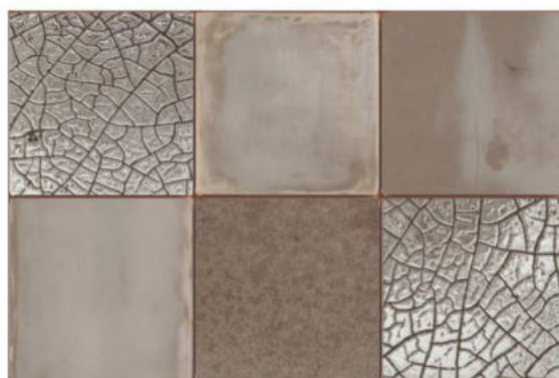
300x450mm  
MATT FINISH



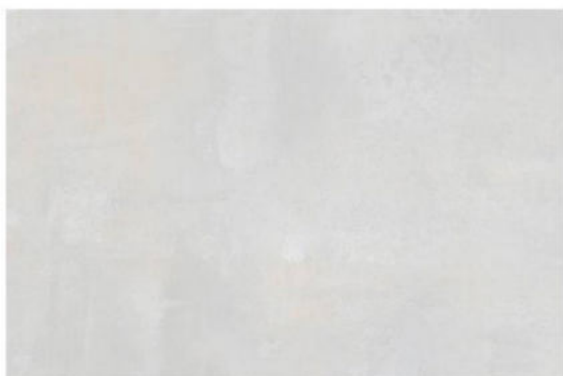
8016-LT



8016-HL



8016-DK



8017-LT



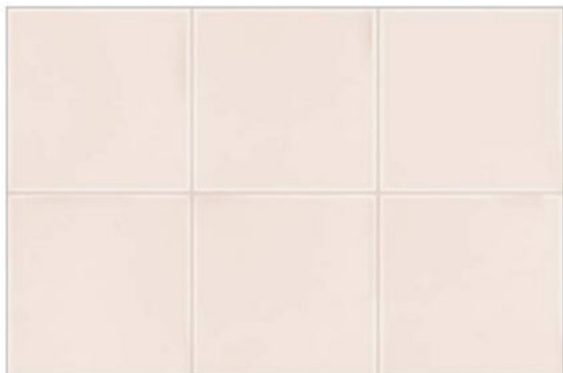
8017-HL



8017-DK



300x450mm  
MATT FINISH



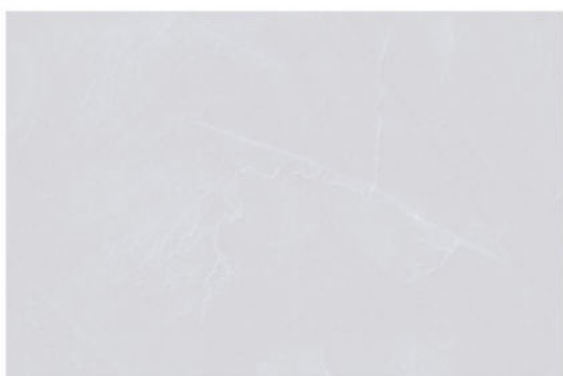
8018-LT



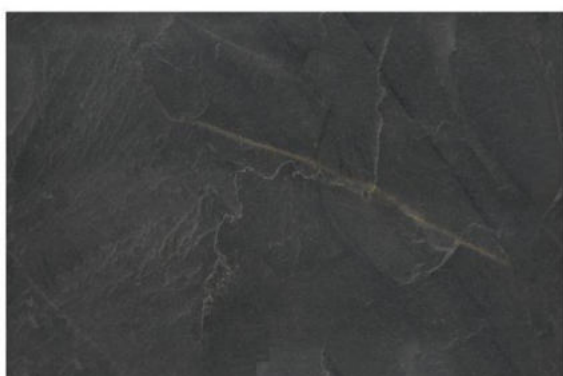
8018-HL



8018-DK



8019-LT



8019-DK



8019-HL-A  
8019-HL-B

300x450mm  
MATT FINISH



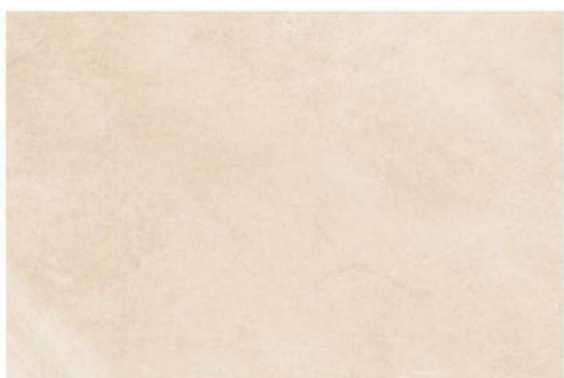
8020-LT



8020-HL



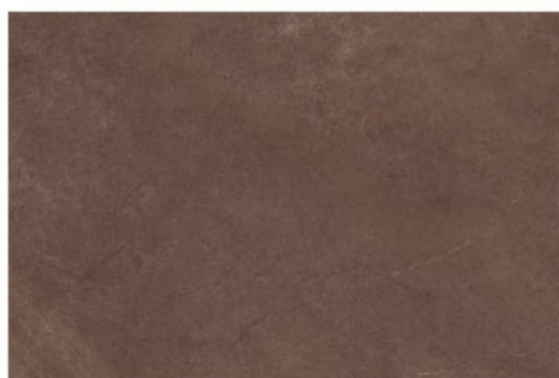
8020-DK



8021-LT



8021-HL



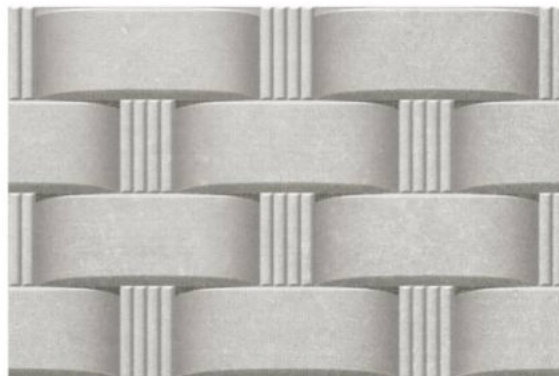
8021-DK



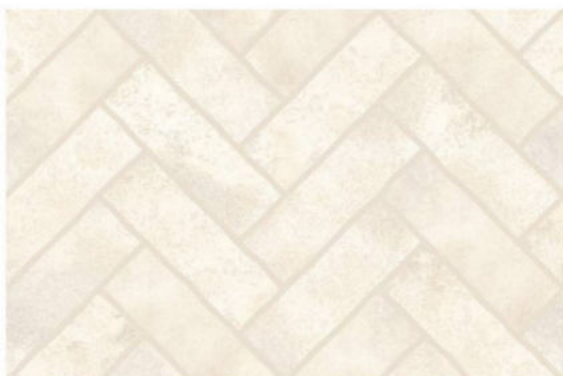
300x450mm  
MATT FINISH



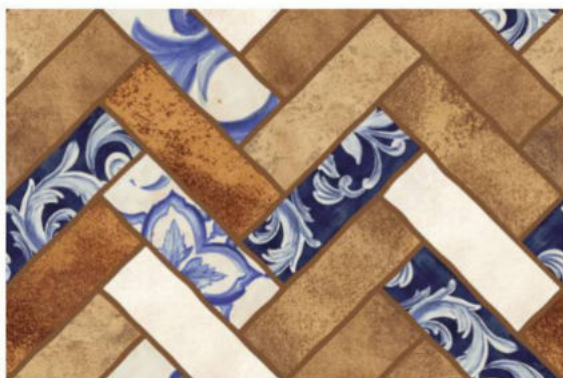
8022-LT



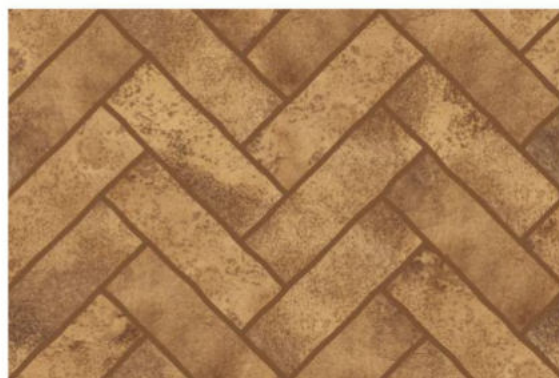
8022-HL



8023-LT



8023-HL



8023-DK

300x450mm  
MATT FINISH



8024-LT



8024-HL



8024-DK





300x450mm  
MATT FINISH



8025-LT



8025-HL



8025-DK

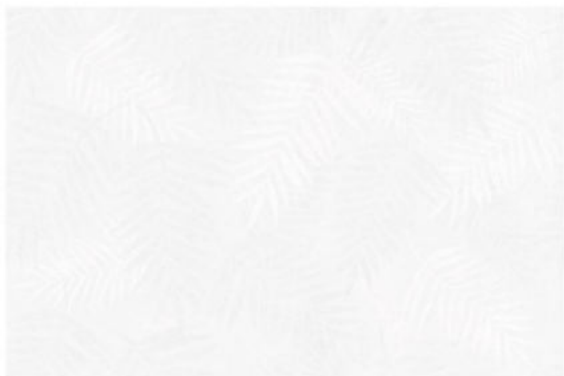








300x450mm  
MATT FINISH



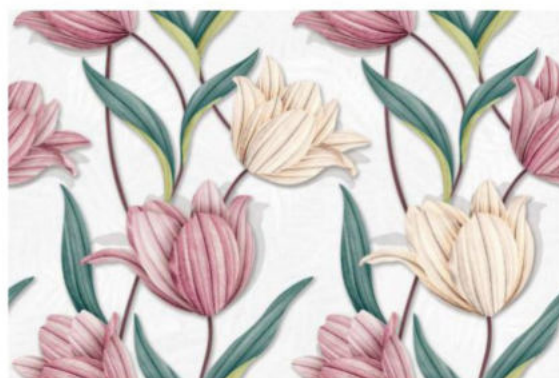
8026-LT



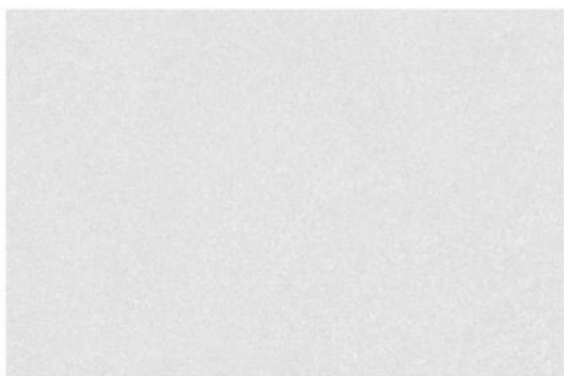
8026-DK



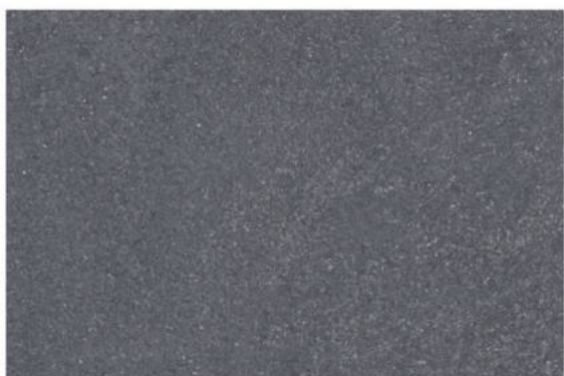
8026-HL-1



8026-HL-2



8027-LT



8027-DK



8027-HL-A  
8027-HL-B

300x450mm  
MATT FINISH



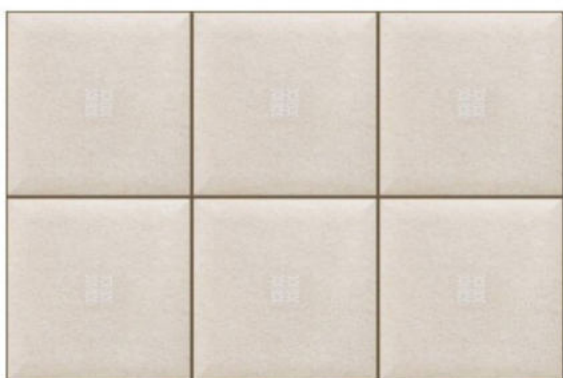
8028-LT



8028-HL



8028-DK



8029-LT



8029-HL



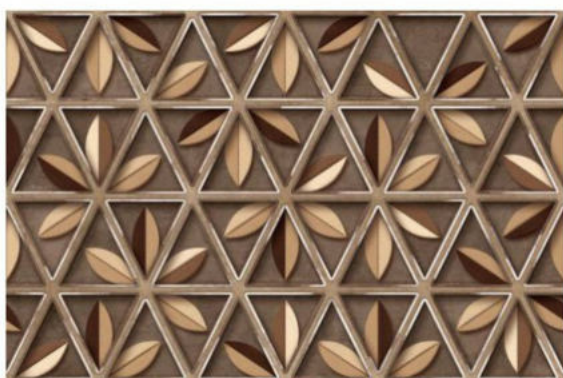
8029-DK



300x450mm  
MATT FINISH



8030-LT



8030-HL



8030-DK



8031-LT



8031-DK



8031-HL-A  
8031-HL-B

300x450mm  
MATT FINISH



8032-LT



8032-HL

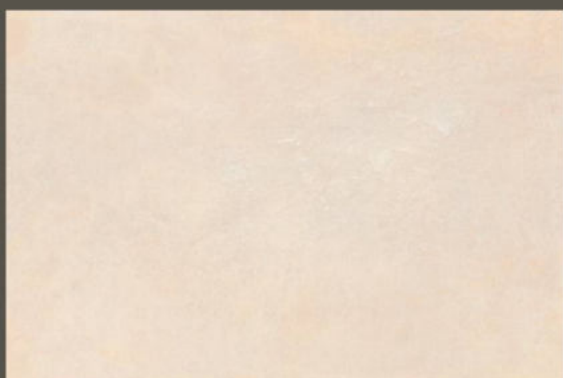


8032-DK





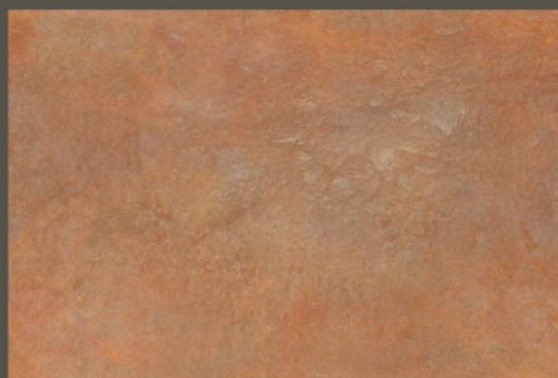
300x450mm  
MATT FINISH



8033-LT



8033-HL

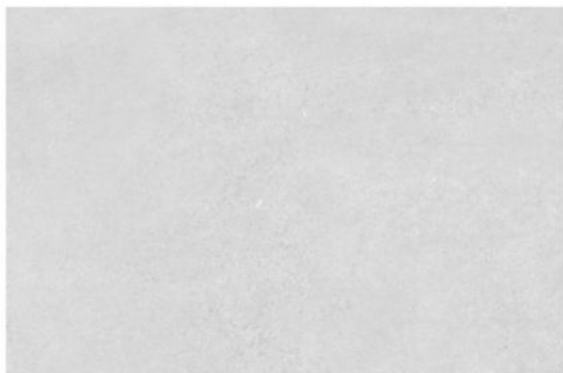


8033-DK

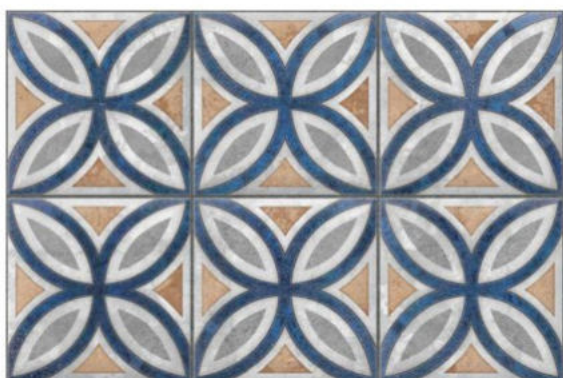




300x450mm  
MATT FINISH



8034-LT



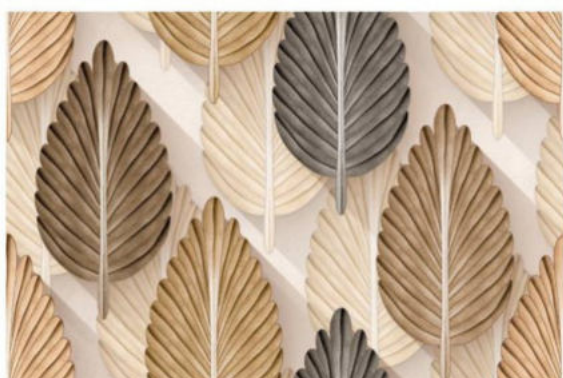
8034-HL



8034-DK



8035-LT



8035-HL

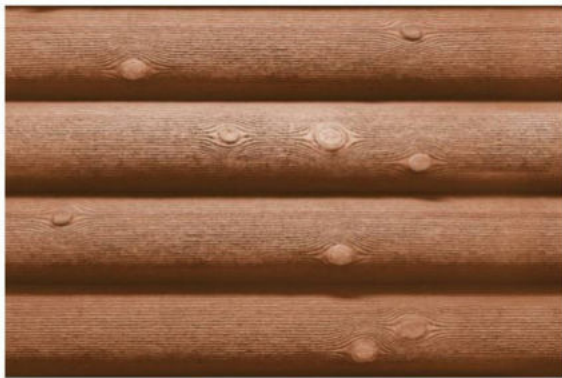


8035-DK

300x450mm  
MATT FINISH



8036-LT



8036-DK



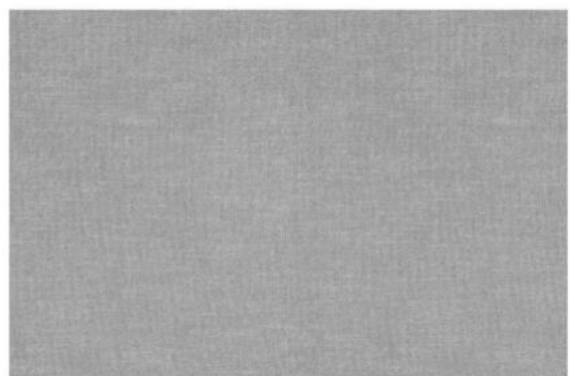
8036-HL-A  
8036-HL-B



8037-LT



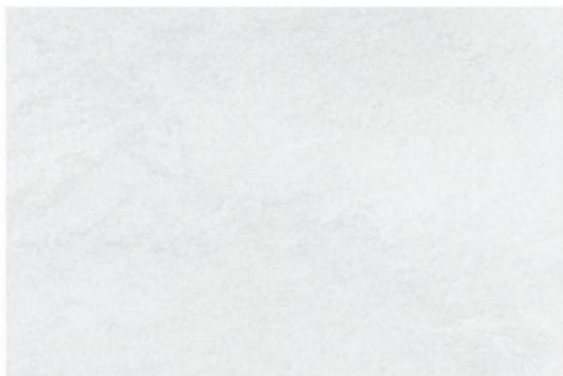
8037-HL



8037-DK



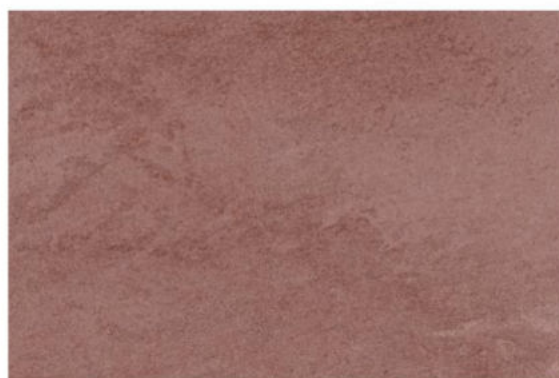
300x450mm  
MATT FINISH



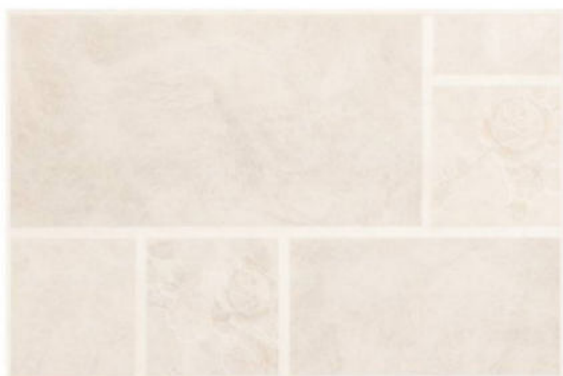
8038-LT



8038-HL



8038-DK



8039-LT

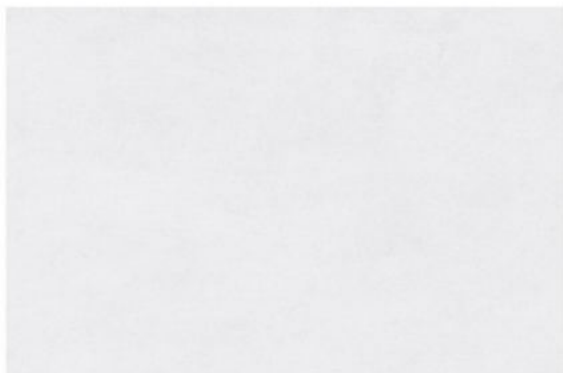


8039-HL



8039-DK

300x450mm  
MATT FINISH



8040-LT



8040-HL



8040-DK



8041-LT



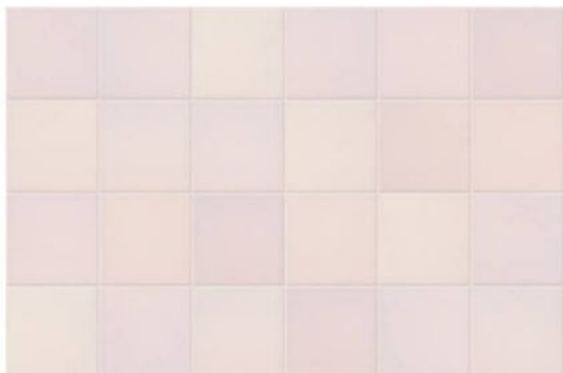
8041-HL



8041-DK



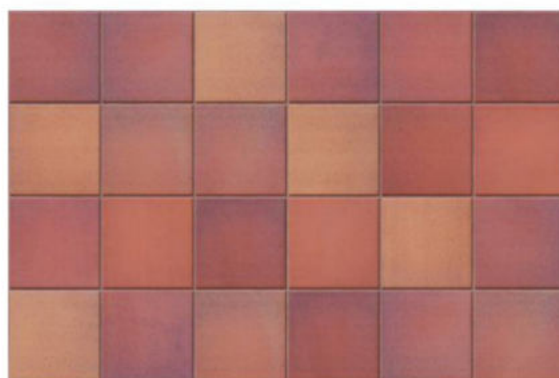
300x450mm  
MATT FINISH



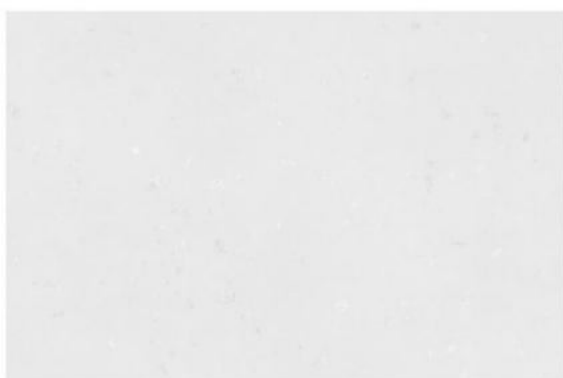
8042-LT



8042-HL



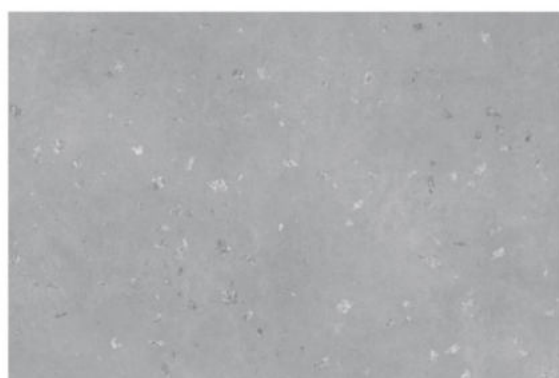
8042-DK



8043-LT



8043-HL



8043-DK

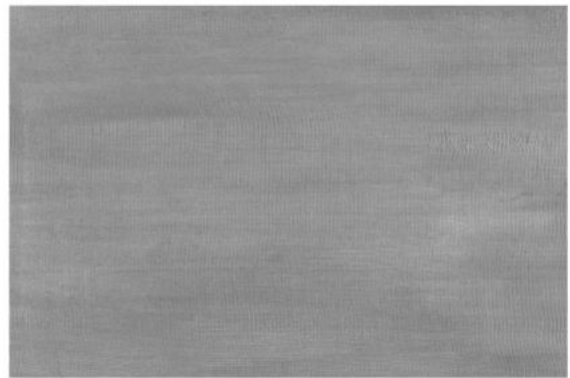
300x450mm  
MATT FINISH



8044-LT



8044-HL



8044-DK

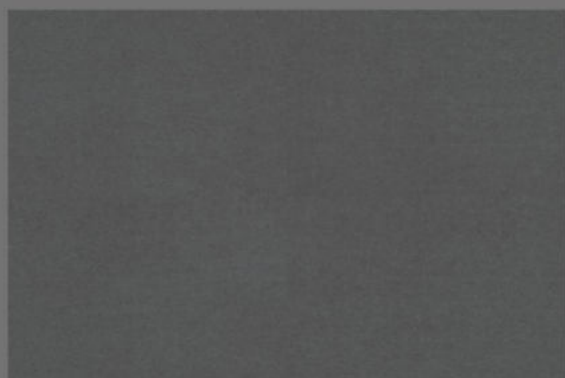




300x450mm  
MATT FINISH



8045-LT



8045-DK



8045-HL-A  
8045-HL-B







300x450mm  
MATT FINISH



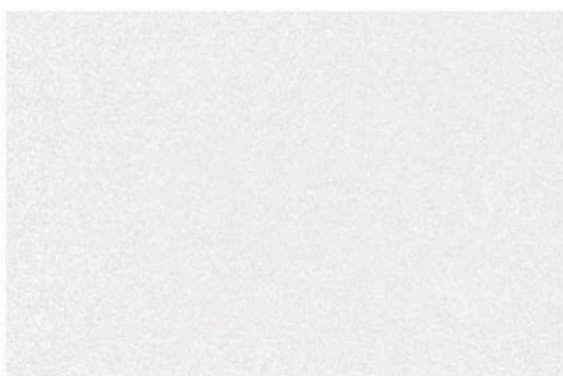
8046-LT



8046-HL



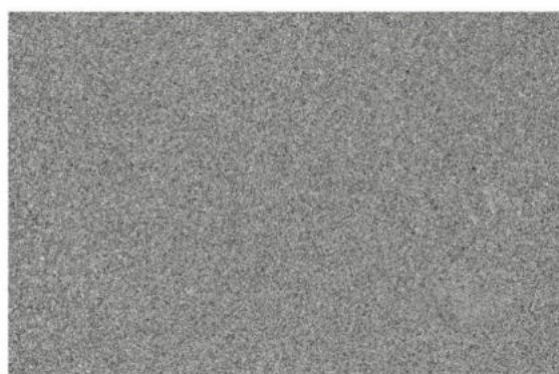
8046-DK



8047-LT



8047-HL

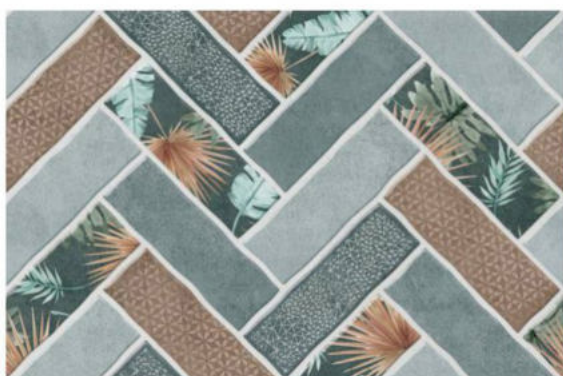


8047-DK

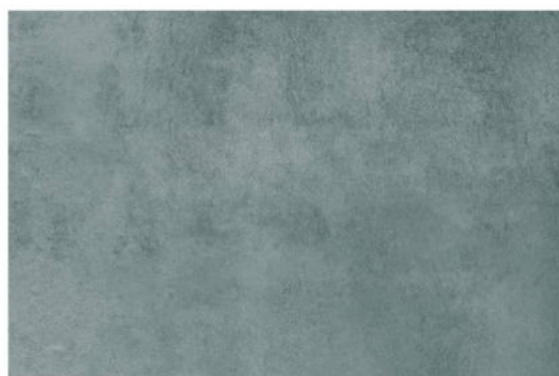
300x450mm  
MATT FINISH



8048-LT



8048-HL



8048-DK



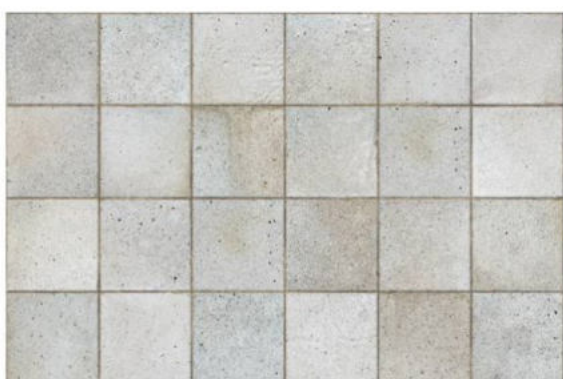
8049-LT



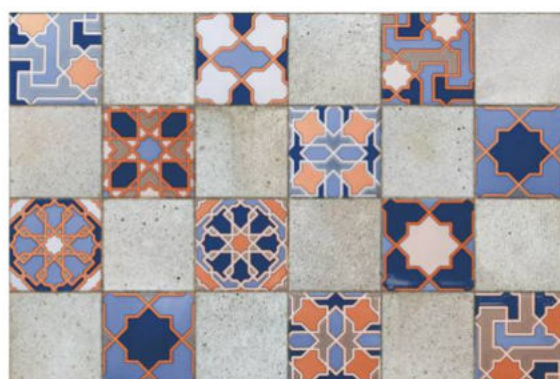
8049-HL



300x450mm  
MATT FINISH



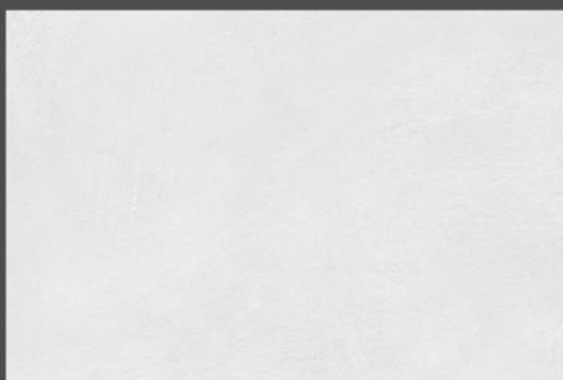
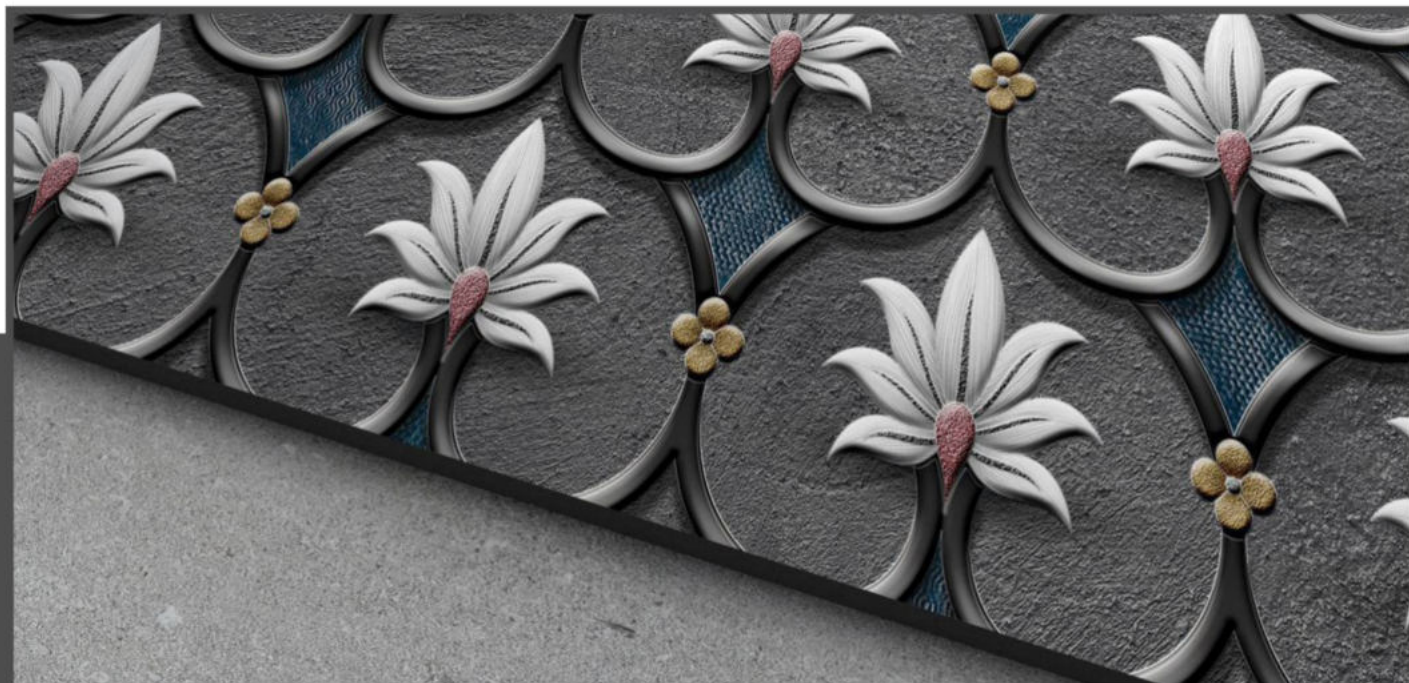
8050-LT



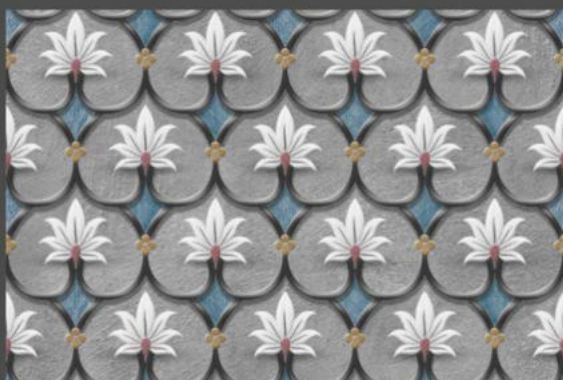
8050-HL



300x450mm  
MATT FINISH



8051-LT



8051-HL



8051-DK



CHEMICAL AND  
STAIN RESISTANT



RESISTANT TO  
SCRATCHES



ECOLOGICAL



RESISTANT TO  
CHEMICALS



EASY TO CLEAN



100% WATER  
RESISTANT

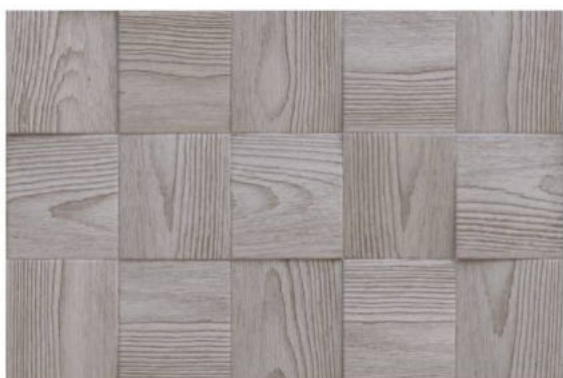




300x450mm  
MATT FINISH



8052-LT



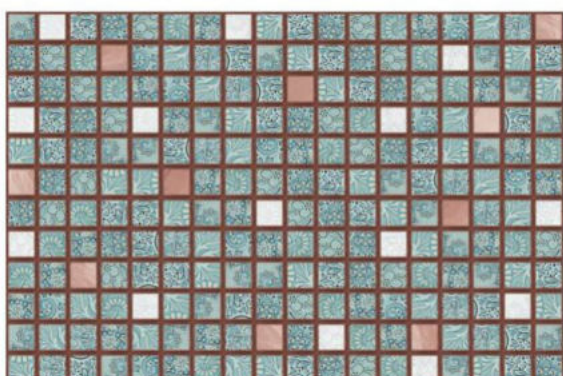
8052-DK



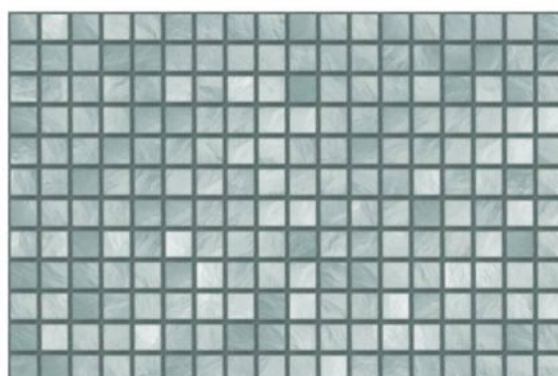
8052-HL-A  
8052-HL-B



8053-LT



8053-HL



8053-DK





*Wahlstand Vitrified*

[WWW.WAHLSTAND.COM](http://WWW.WAHLSTAND.COM)