

3 D D E S I G N  
6 0 X 1 2 0 C M



wahlstand  
*Vitrified*

W E W A N T T O E M B R A C E T H E W O R L D



Comfort  
with  
living life



**SERIES**

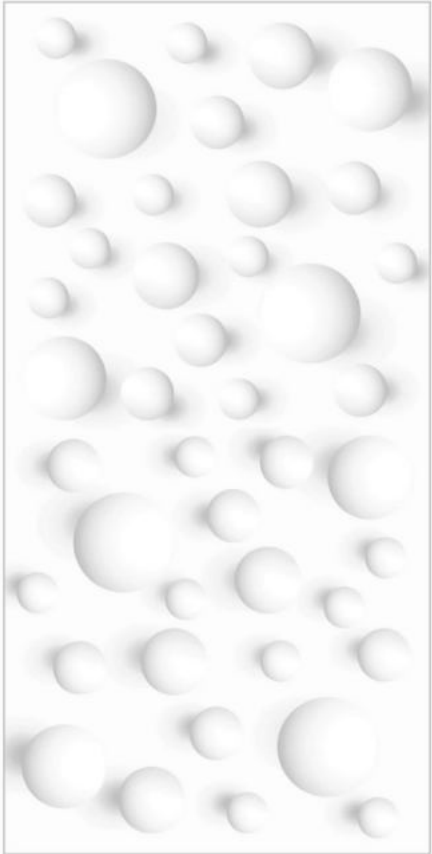
*Wahlstand Vitrified*

Lorem Ipsum is simply dummy text of the printing and typesetting industry. Lorem Ipsum has been the industry's standard dummy text ever since the 1500s, when an unknown printer took a galley of type and scrambled it to make a type specimen book.

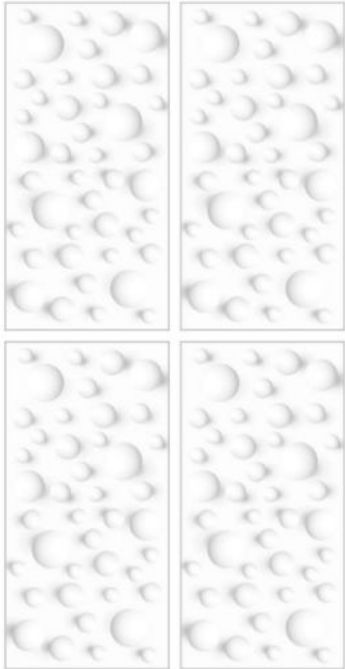
PGVT  
**600X1200MM**



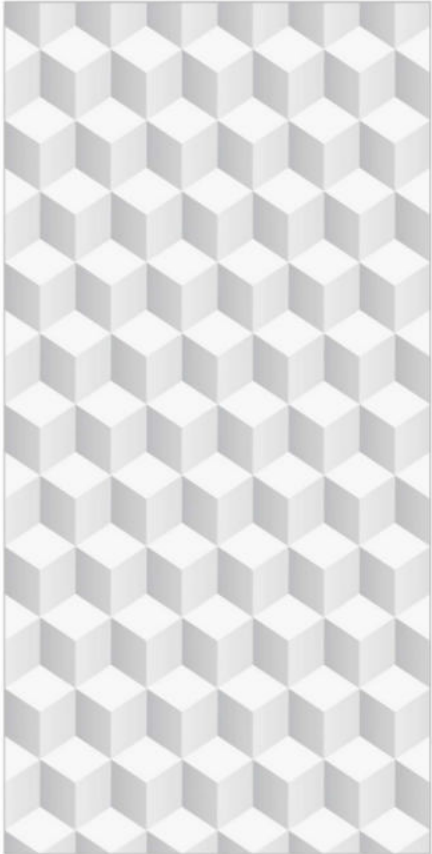
Wahlstand Vitrified  
Embrace the World



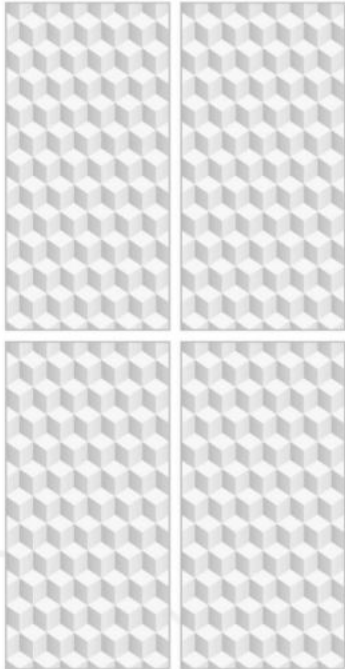
1001



RANDOM- 01



1002



RANDOM- 01



Wahlstand Vitrified  
Embrace the World

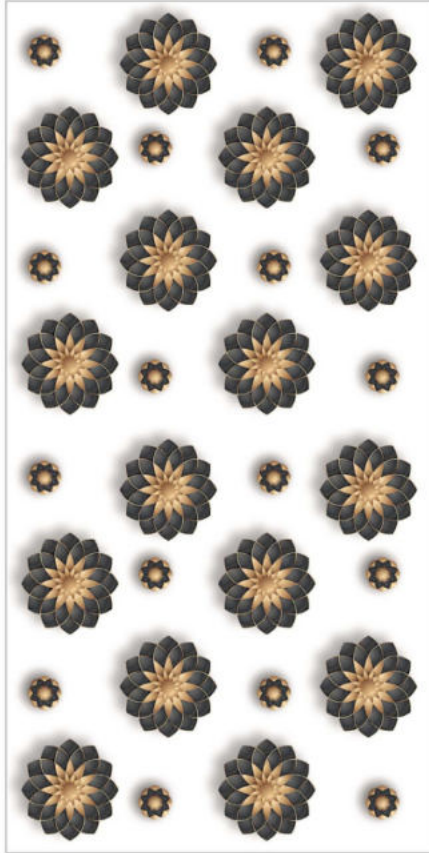
PGVT 600X1200MM



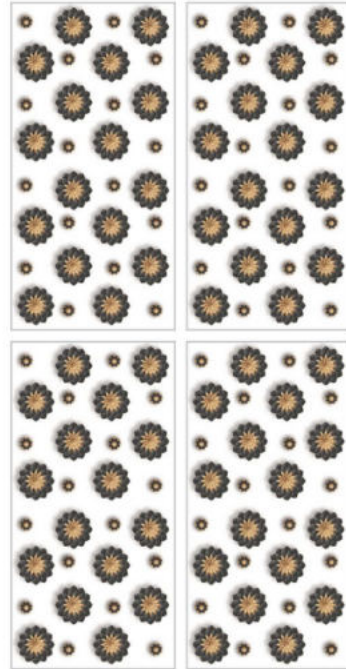
1002



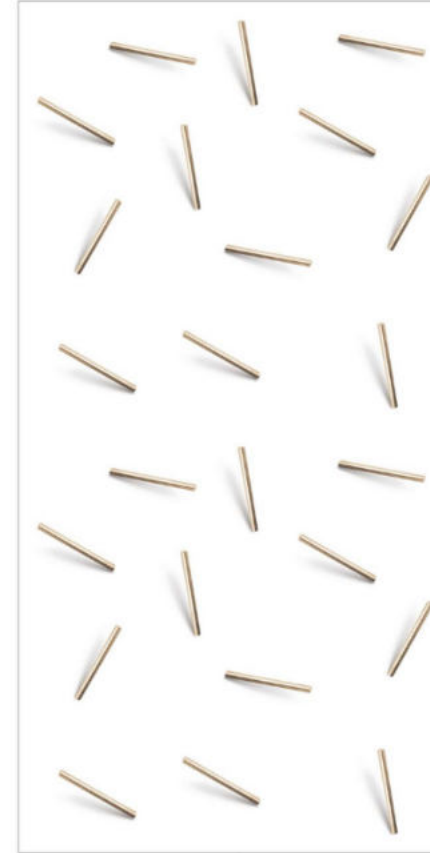
Wahlstand Vitrified  
Embrace the World



1003



RANDOM-01



1004



RANDOM-01



Wahlstand Vitrified  
Embrace the World

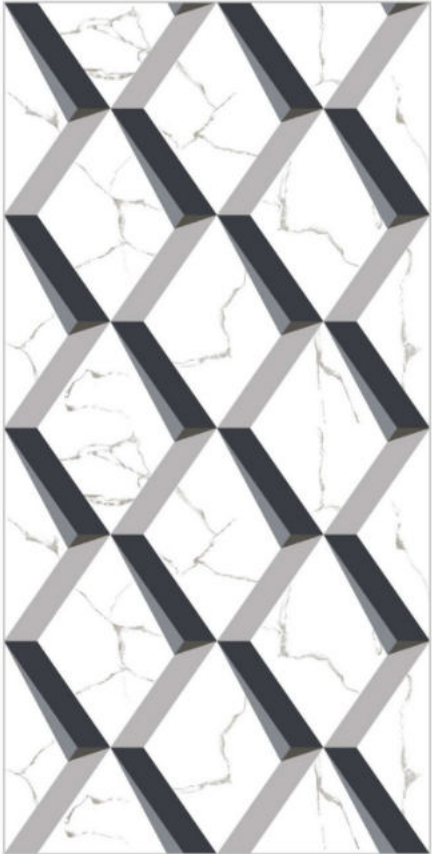
PGVT 600X1200MM



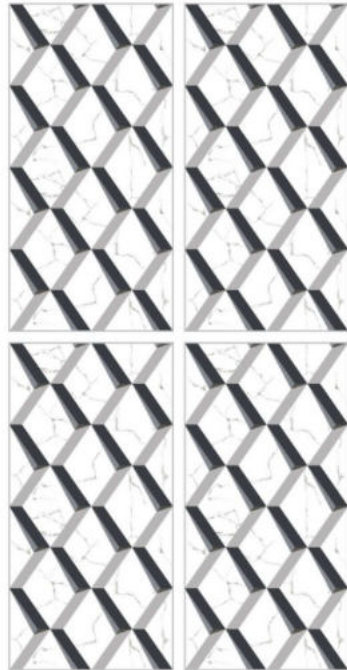
1003



Wahlstand Vitrified  
Embrace the World



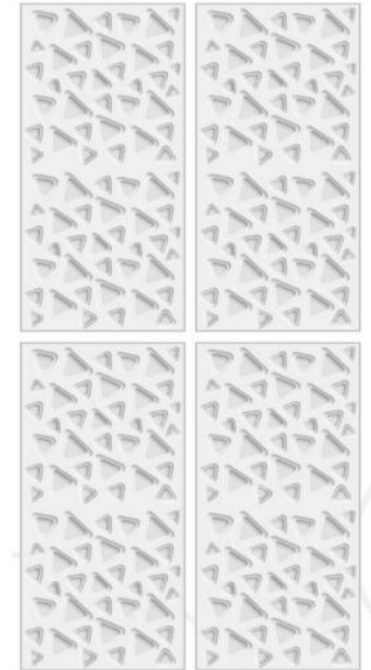
1005



RANDOM- 01



1006



RANDOM- 01



Wahlstand Vitrified  
Embrace the World

PGVT 600X1200MM

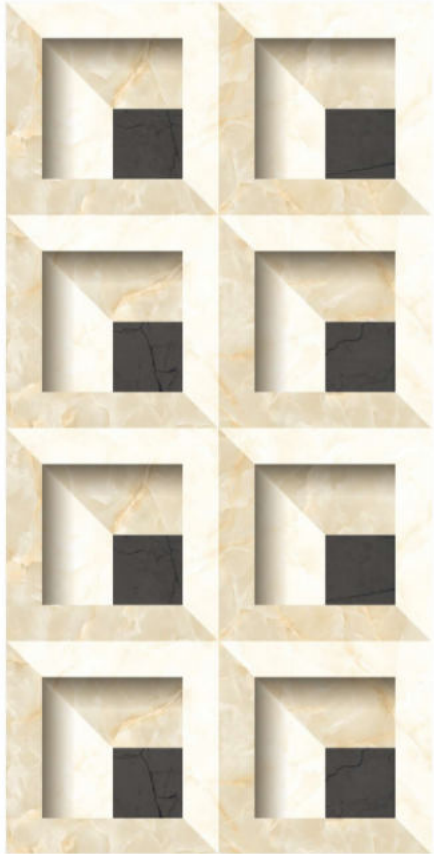
1005



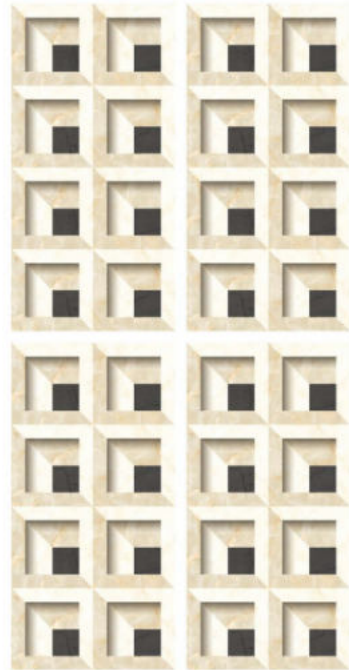




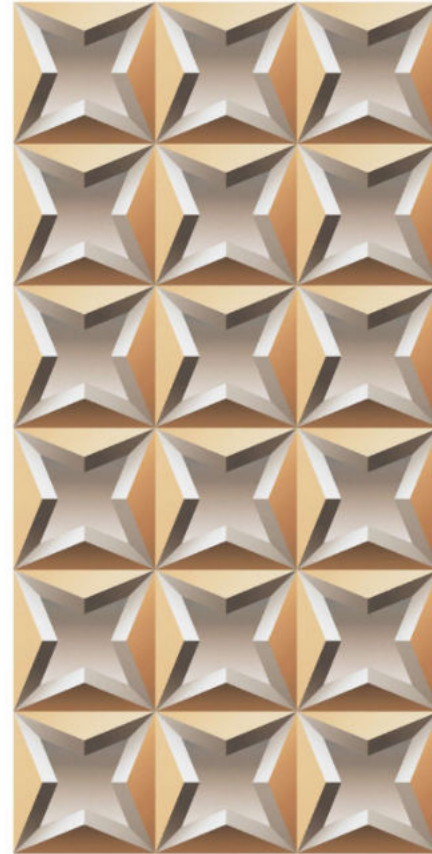
Wahlstand Vitrified  
Embrace the World



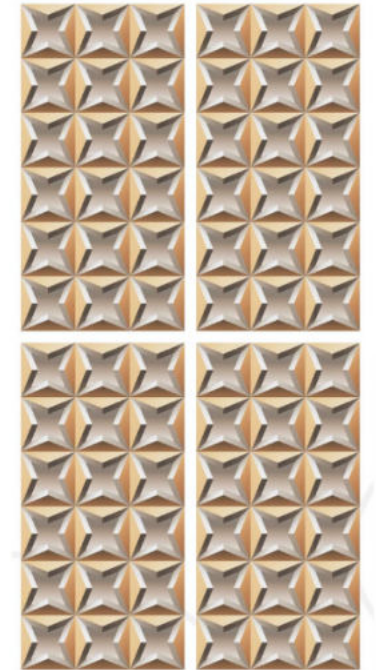
1007



RANDOM- 01



1008



RANDOM- 01



Wahlstand Vitrified  
Embrace the World

PGVT 600X1200MM



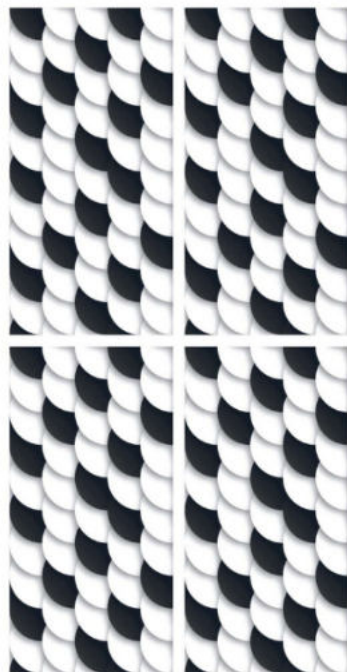
1007



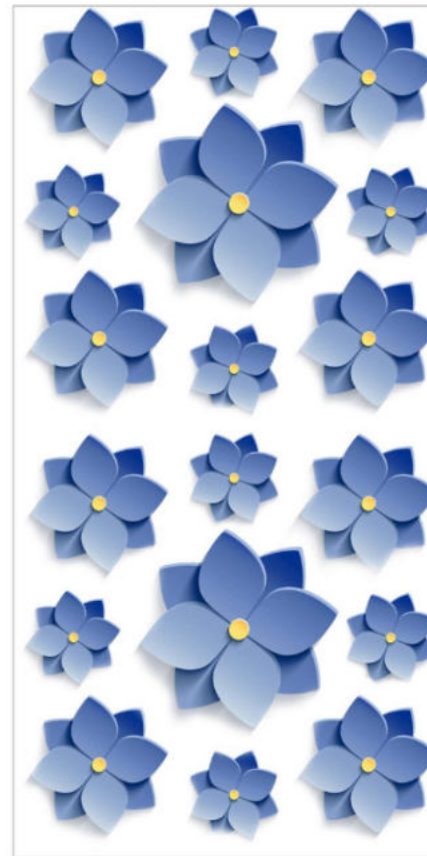
Wahlstand Vitrified  
Embrace the World



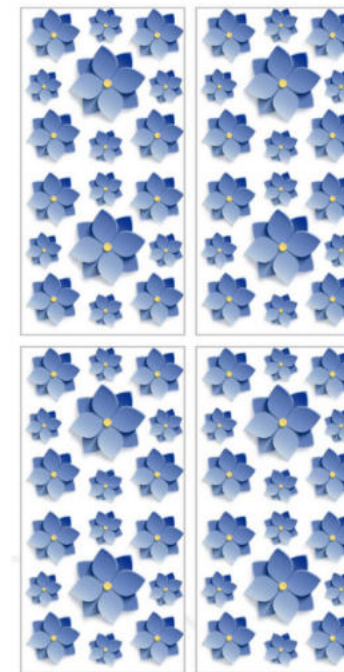
1009



RANDOM- 01



1010



RANDOM- 01



Wahlstand Vitrified  
Embrace the World

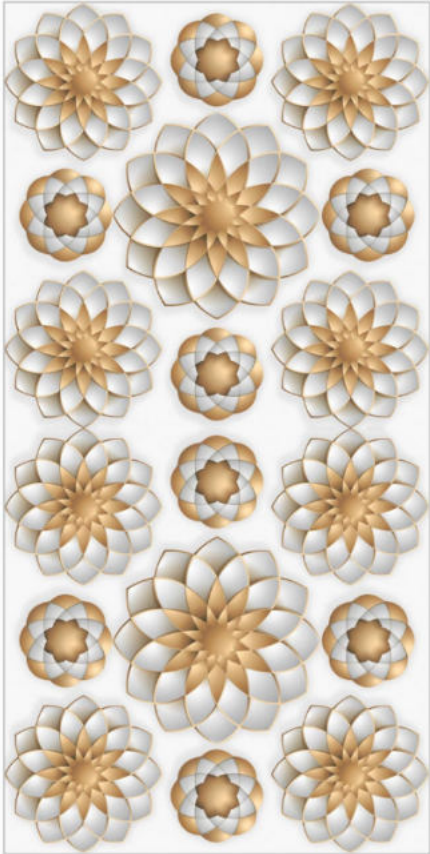
PGVT 600X1200MM



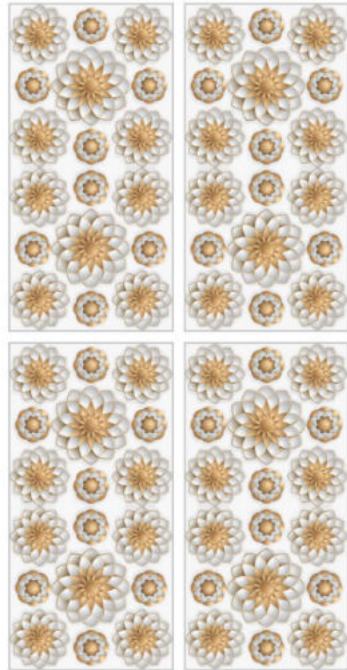
1009



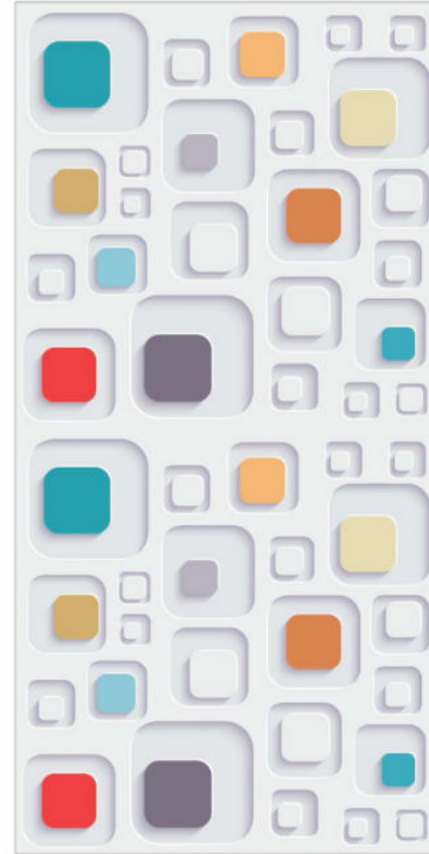
Wahlstand Vitrified  
Embrace the World



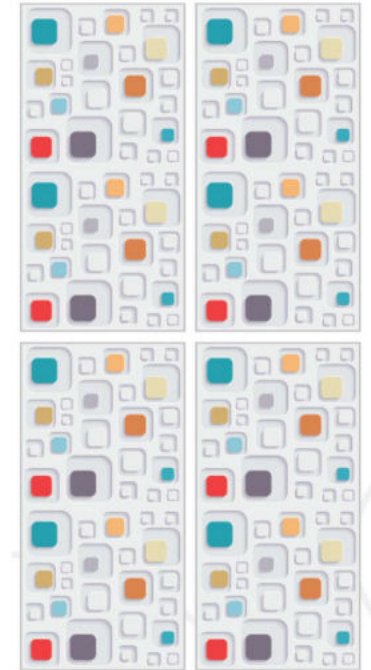
1011



RANDOM- 01



1012



RANDOM- 01



*Wahlstand Vitrified*  
Embrace the World

PGVT 600X1200MM

1011

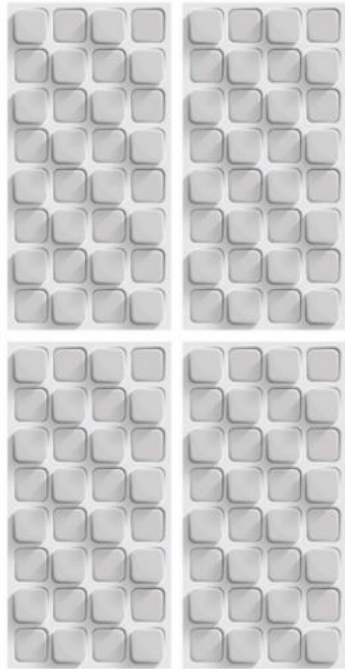




Wahlstand Vitrified  
Embrace the World



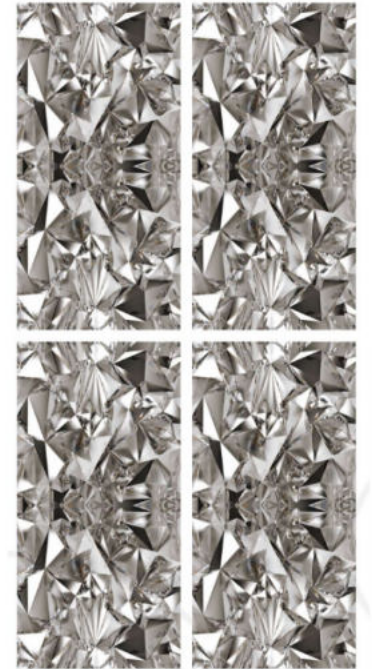
1013



RANDOM-01



1014



RANDOM-01



Wahlstand Vitrified  
Embrace the World

PGVT 600X1200MM



1013



# Technical Specification

CHARACTERISTIC	STANDARD AS PER ISO-13006/EN 14411 GROUP Bla	MEAN VALUE OF POLISHED GVT	MEAN VALUE OF GVT / PGVT	TEST METHOD
<b>REGULATORY PROPERTIES</b>				
Deviation in length & width	±0.5 %	±0.1 %	±0.1 %	ISO-10545-2
Deviation in thickness	±5.0 %	±4.0 %	±4.0 %	ISO-10545-2
Straightness in side	±0.5 %	±0.1 %	±0.1 %	ISO-10545-2
Rectangularity	±0.5 %	±0.1 %	±0.1 %	ISO-10545-2
Surface flatness	±0.5 %	±0.2 %	±0.2 %	ISO-10545-2
Color dierence	Unaltered	No change	No change	ISO-10545-16
Glossiness	As per mfg	Min 90%	Min 4%	GLOSSOMETER
<b>STRUCTURAL PROPERTIES</b>				
Water absorption	< 0.50 %	< 0.20 %	< 0.20 %	ISO-10545-3
Apparent density	> 2.0 g/cc	>2.10 g/cc	>2.10 g/cc	DIN 51082
<b>MASSIVE MECHANICAL PROPERTIES</b>				
Breaking strength	Min. 35 N/mm	Min. 40 N/mm <sup>2</sup>	Min. 40 N/mm <sup>2</sup>	ISO-10545-4
Impact resistance	Min. 1300 N	Min. 2000 N	Min. 2000 N	ISO-10545-4
	As per mfg	Min. 0.55	Min. 0.55	ISO-10545-5
<b>SURFACE MECHANICAL PROPERTIES</b>				
Surface abrasion resistance	As per mfg	Min. Class-3	Min. Class-4	ISO-10545-7
MOH's hardness	As per mfg	Min. 4	Min. 5	EN 101
<b>THERMO HYDROMETRIC PROPERTIES</b>				
Frost resistance	No damage	No damage	No damage	ISO-10545-12
Thermal shock resistance	No damage	No damage	No damage	ISO-10545-9
Moisture expansion	Nil	Nil	Nil	ISO-10545-10
Thermal expansion (COE)	Max. 9.0 x 10 <sup>-6</sup>	Max. 6.5x10 <sup>-6</sup>	Max. 6.5 x 10 <sup>-6</sup>	ISO-10545-8
Crazing resistance	As per mfg.	Min. 10 Cycle	Min. 10 Cycle	ISO-10545-11
<b>CHEMICAL PROPERTIES</b>				
Chemical resistance	No damage	No damage	No damage	ISO-10545-13
Stain resistance	Resistant	Resistant	Resistant	ISO-10545-14
<b>SAFETY PROPERTIES</b>				
Slip resistance	As per mfg.	>0.40	>0.40	ISO-10545-17
Fire resistance	As per mfg.	Fire proof	Fire proof	N. A.
Lead & Cadmium given o by glazed tiles	As per mfg.	Does not yield Pb & Cd	Does not yield Pb & Cd	ISO-10545-15

# Packing Detail

SR. NO.	PRODUCT	NOMINAL SIZE	TILES PER BOX	COVERAGE AREA	WEIGHT
1	VITRIFIED TILES	600 x 1200 mm	2	1.44 Sq. Mtr.	29 Kg Approx..

**Note:** •Colour Shown are as accurate as the limitations of the printing process will allow. •Prospective customers are advised to inspect a sample of the tile before ordering. •Every effort has been made to ensure the accuracy of the information given. •However, the company reserve the right to change the specifications without prior notice. •Sometime variations in shade or size being inherent to ceramic industry may occur. •Before fixing, we advise you to follow the fixing instructions on the cartons of the tiles as no responsibility can be accepted by the company once the tiles have been fixed.

## Applications.



**DISCLAIMER :** We reserves the right to delete & amend either totally of partially, and of the colours, shapes, size, references and other technical specification contain in catalogue at any time. the colours shown of tiles in this catalogue are purely illustrative and limited to printing process. Please refer actual sample final selection. The details of colours, size, references should be vitrified for Typographical errors. SHADE & SIZE VARIATIONS are inherent characteristics of ceramics. NO COMPLIANT SHALL BE SHALL ENTERTAINED ON TILES ALREADY LAID/FIXED.